

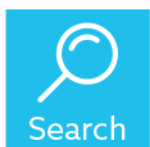
Quick Start Guide

Find Books and Learning Content on Epic!



Explore the Epic! Library

1. Click on the Browse icon located at the top of the Epic! for Educators screen
2. Click the drop down menu to sort Epic!'s 25,000 books, learning videos, and quizzes



Search for Exciting Content

1. Click on the Search icon located at the top of the Epic! for Educators screen
Search by author, title or keyword
2. Click Advanced Search to refine your results by reading level, age, or genre

Create Profiles for Your Students

On the Web...

1. Click your teacher avatar to access the teacher dashboard
2. Enter the new student profile name (Note: PIN code and parent email are optional)
3. Click on the green 'Create Profile' button
4. Repeat steps 2-3 for the next student

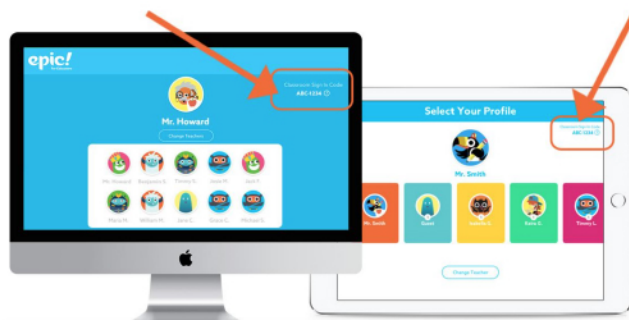


On Google Classroom...

1. Log into your Epic! for Educators account
2. Enter your teacher dashboard by selecting on your teacher avatar
3. Click on the "Import Google Classroom" button at the top of your dashboard
4. Once you are logged into your Google account, select the course you would like to import, then select the student profiles you would like to import (Note: only student names will be imported)

Find Your Classroom Code

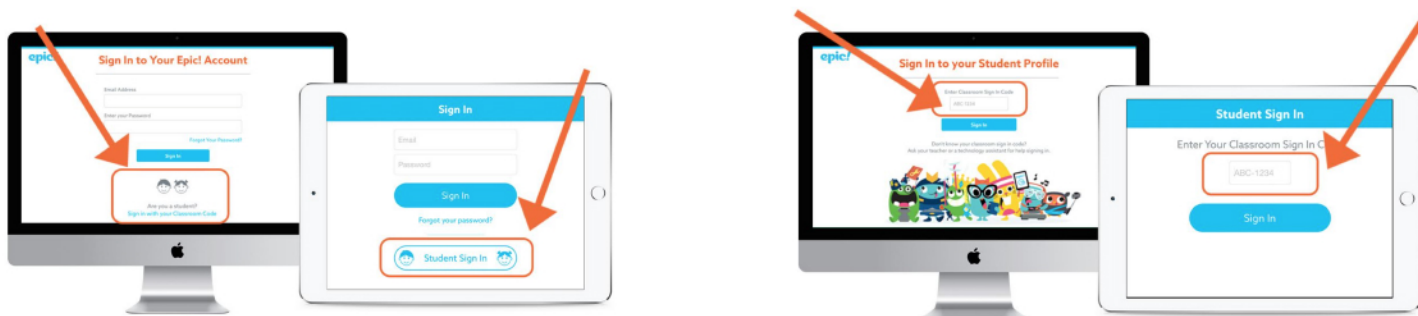
When you log into Epic! on the web or your iOS device, you can find your classroom code on the top, right-hand corner of the screen



Log Your Students Into Epic!

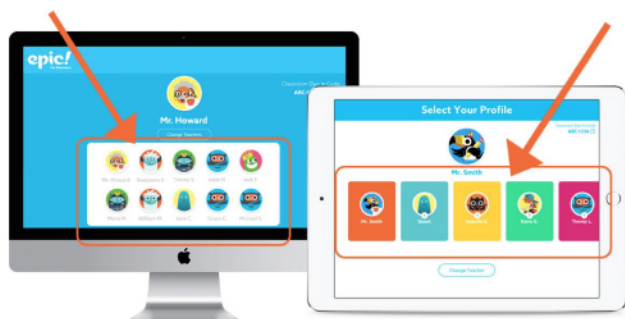
Any number of devices can be logged into the same educator account simultaneously! Here's how students log into Epic!

1. Direct your students to www.getepic.com/sign-in or use the Epic! app on their iOS device



2. Students select "Student Sign In"

3. Students enter their classroom code



4. Students select their profile

Check out our full Epic! guide, tutorial videos, and educator resources, available at [http://www.getepic.com/educator-resources!](http://www.getepic.com/educator-resources)