

'S



DISCOVERY JOURNAL



Day 1

A large, empty rectangular box with a thin gray border, occupying the upper half of the page. It is intended for a drawing or illustration.



★ **Day 2**

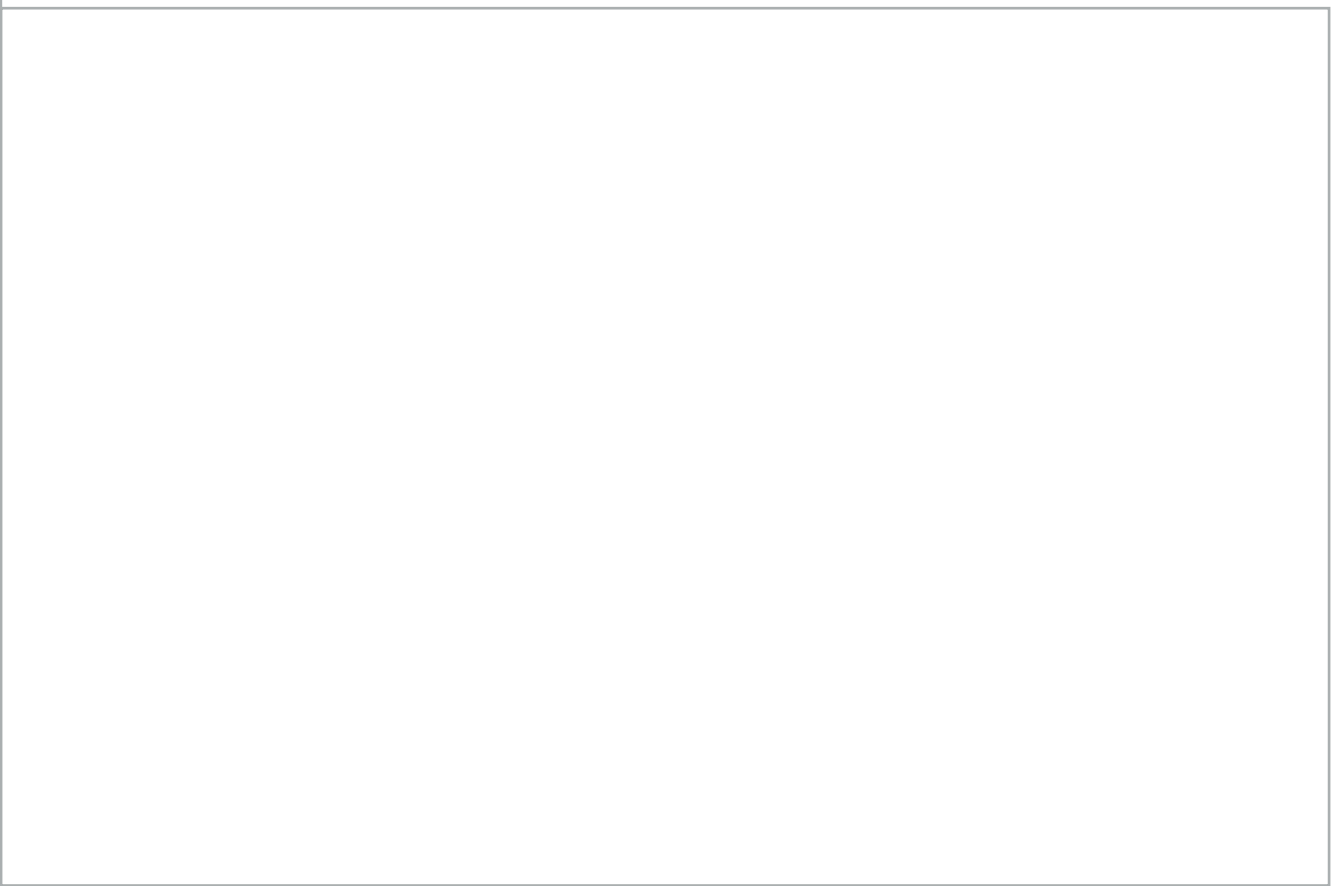
A large, empty rectangular box with a thin black border, occupying the upper half of the page. It is intended for drawing or writing.

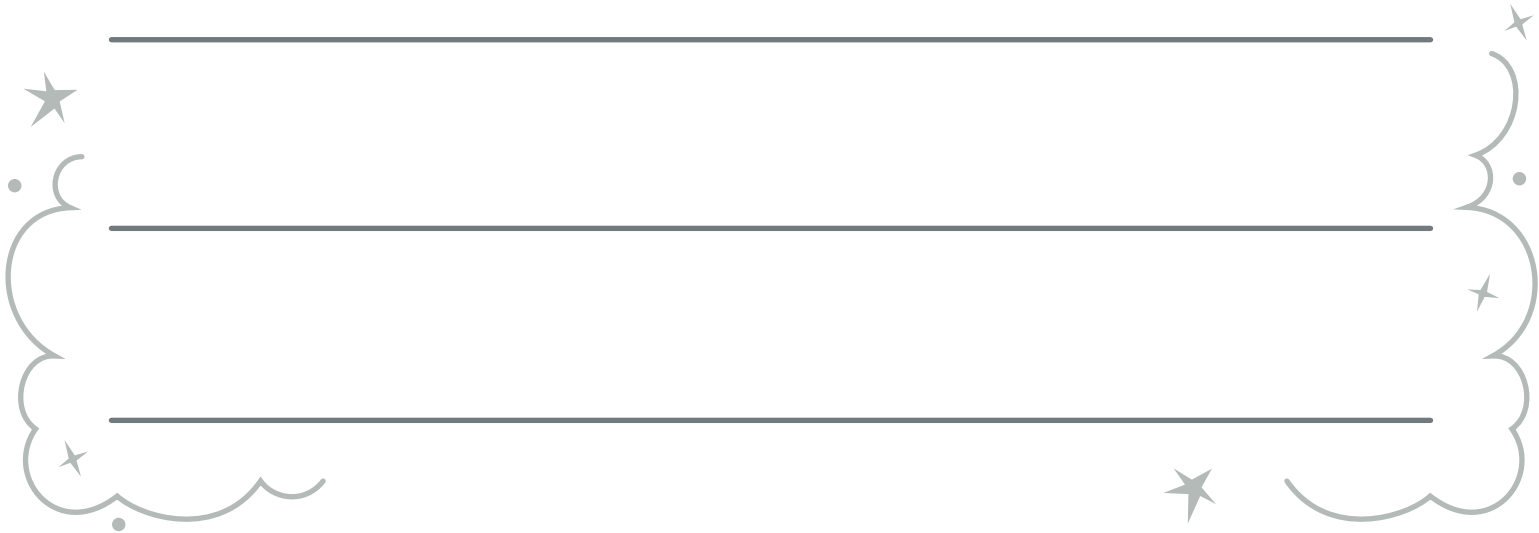
Day 3

A large, empty rectangular box with a thin gray border, occupying the upper half of the page. It is intended for a drawing or illustration.



Day 4





Day 5

A large, empty rectangular box with a thin gray border, occupying the upper half of the page. It is intended for drawing or writing.



★ **Day 6**



A large, empty rectangular box with a thin black border, intended for drawing or writing.

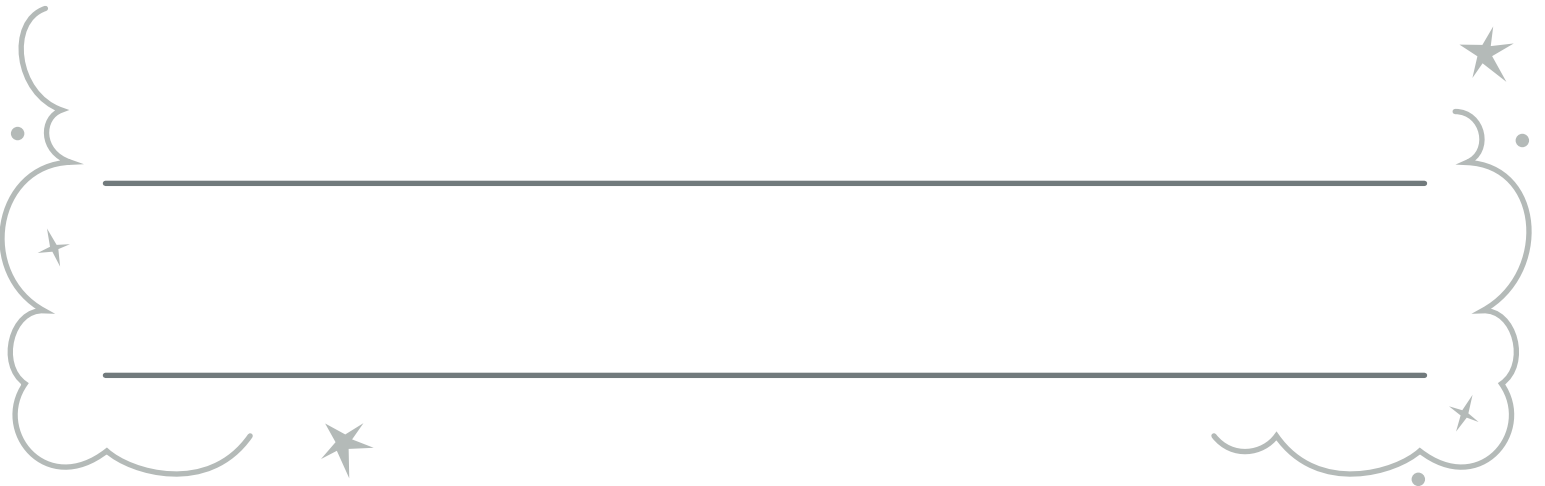


Day 7



A large, empty rectangular box with a thin gray border, occupying the upper half of the page. It is intended for drawing or writing.







***You read for the stars and
completed the challenge!***